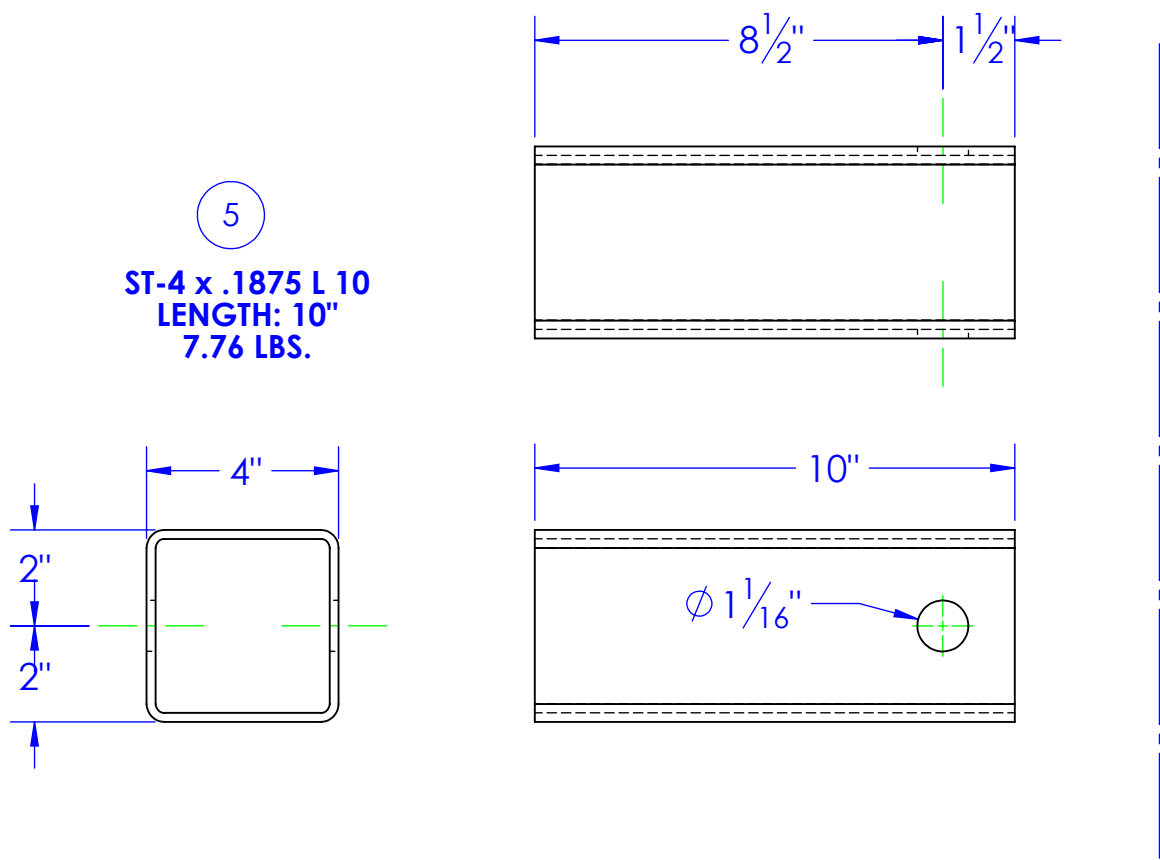
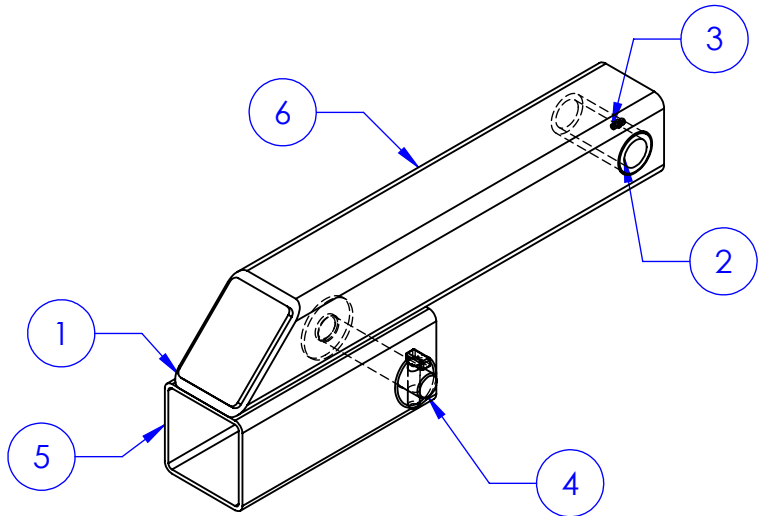
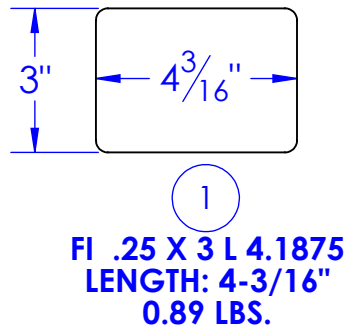
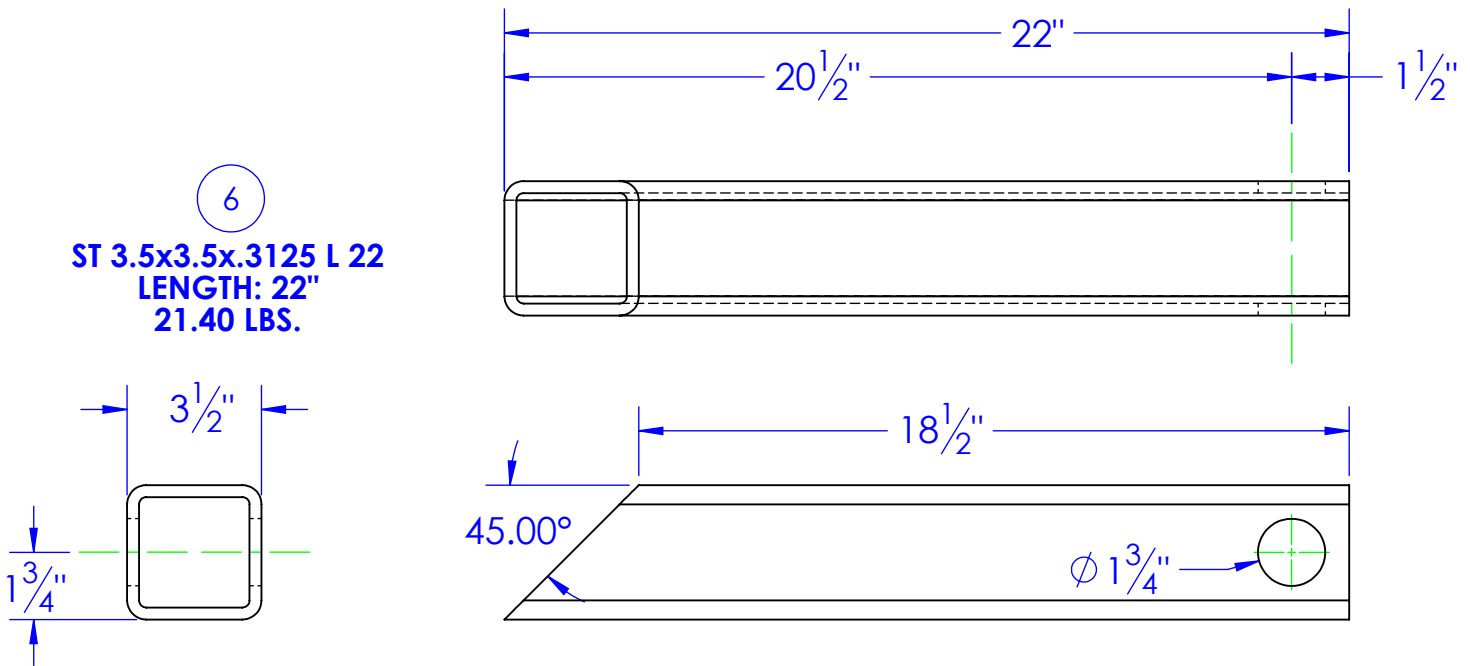
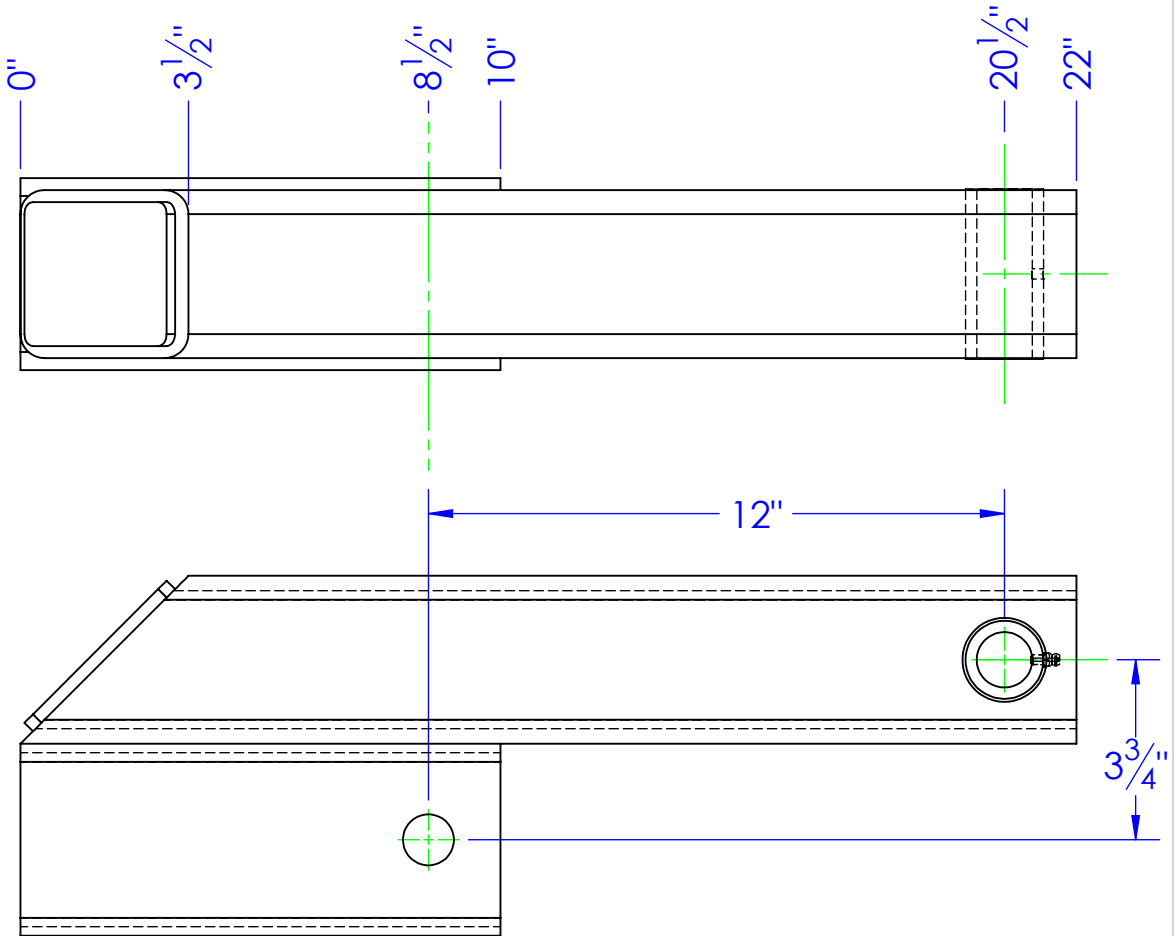
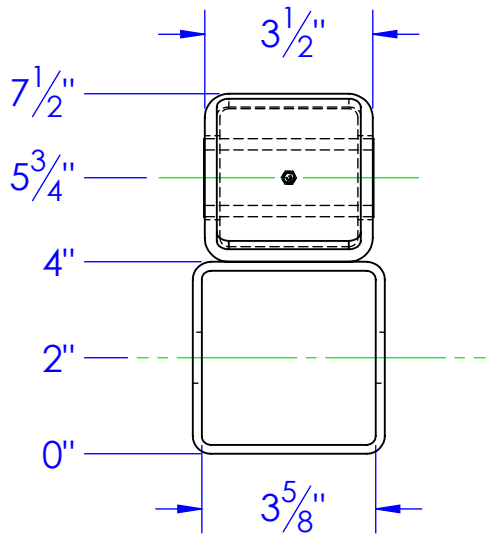


ITEM NO.	PART NUMBER	DESCRIPTION	MATERIAL	DRAWING #	QTY.
1	FI .25 X 3 L 4.1875	LENGTH: 4-3/16"	FI 1/4" x 3"	STOCK	1
2	FP-SB50-101	50 SPINNER BUSHING	MT 1.625x1.125	10-2500	1
3	HD-ZG .25-28 STR	GREASE ZERK 1/4-28 STRAIGHT	STOCK	STOCK	1
4	RE-PN-C1x525	PIN, CON, 5-1/4"		10-1707	1
5	ST-4 x .1875 L 10	LENGTH: 10"	ST-4 x 3/16"	STOCK	1
6	ST 3.5x3.5x.3125 L 22	LENGTH: 22"	ST-3-1/2x5/16	90-1306	1

REVISIONS			
REV.	DESCRIPTION	DATE	APPROVED
B	UPDATED TO MATCH 3D MODEL	12/20/2012	



REQD QTY: 2



PROPRIETARY AND CONFIDENTIAL

THE INFORMATION CONTAINED IN THIS DRAWING IS THE SOLE PROPERTY OF <INSERT COMPANY NAME HERE>. ANY REPRODUCTION IN PART OR AS A WHOLE WITHOUT THE WRITTEN PERMISSION OF <INSERT COMPANY NAME HERE> IS PROHIBITED.

UNLESS OTHERWISE SPECIFIED:

DIMENSIONS ARE IN INCHES  
TOLERANCES:  
FRACTIONAL  $\pm 1/16$   
ANGULAR: MACH  $\pm 1$  BEND  $\pm$   
TWO PLACE DECIMAL  $\pm 0.10$   
THREE PLACE DECIMAL  $\pm 0.005$

MATERIAL

DO NOT SCALE DRAWING

	NAME	DATE	P.O. BOX 248, SABETHA KS. 66534 (785) 284-3674 FAX (785) 284-3931		
DRAWN	HEATH	12/21/2012	<div>TRIPLE C</div> <div>INC.</div>		
PART #					
ASM #	OP-AE-10150SB				
COMMENTS:			SIZE DWG. NO. REV		
ARM EXTENSION DELUXE, 150 SERIES			B 90-1305 B B		
			SCALE: 1:4 WEIGHT: 32.36 SHEET 1 OF 1		